

**doka**

The Formwork Experts.

# Framed formwork **Frameco RU**

Efficient steel framed formwork



# Efficient steel framed formwork.



## Ideal for residential construction

- System specially developed for residential construction with typical floor-to-ceiling height 2.8 – 3.0 m
- 0.5 x 3.0 m panel specially developed for forming right-angled corners without joint plates (for standard wall thickness 200 mm)
- For forming columns, corners and straight walls – universal panel 0.9 x 3.0 m



Basis of the panel:  
high-quality, high-precision  
forming profile



Original form of the panel –  
integrated system of fixing  
accessories (including  
universal walings and  
panel struts)



Full compatibility with  
the range of original  
Doka accessories



Original anchor sleeve –  
oval cone with offset radii



Form-tie holes: only 2 form  
ties for pouring height of  
3.0 m

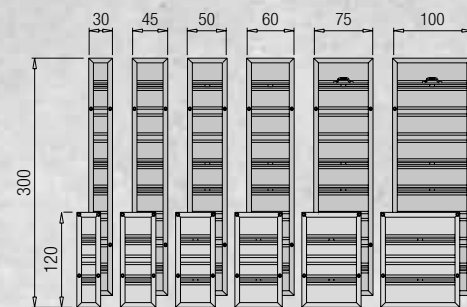


## Unsurpassed easy working with the system – Frameco RU

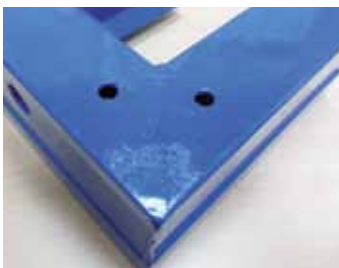


### Simplicity and reliability

- Easy formwork planning, positioning and assembly of gang-forms with minimal number of infills (timber and plywood) – only 6 widths
- Use of reliable connecting elements and Doka accessories
- Symmetrical arrangement of form-ties and only 4 holes for tie rods in the panel, so it is impossible to install the elements incorrectly or with too many tie rods.
- Simple logistics and storing on the jobsite or in the warehouse



Logical size-grid (only 6 widths) ensures assembly of gang-forms with a minimum number of infills (timber and plywood), and simple logistics and storing on the jobsite or in the warehouse



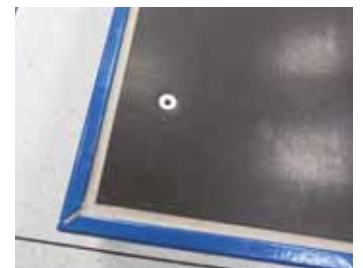
Holes for venting and drainage in the forming profile



Practical accessories for moving big gang-forms by crane



Formwork sheet – laminated plywood 18 mm (class 1/1).  
Face-film thickness – 220 g/m<sup>2</sup>



High-quality silicone mastic between panel frame and plywood sheet

# Frameco RU

## steel framed formwork for walls and columns

### Economical solution

- Basis of panel: high-quality, high-precision forming profile manufactured in Russia; original engineering solution by Doka
- Formwork sheet – plywood 18 mm (class 1/1).
- Film thickness – 220 g/m<sup>2</sup>

### Quick workflow

- Less time needed for selecting the necessary panels – only 6 widths
- Only 2 form ties for pouring height of 3.0 m
- Assembly of gang-forms with minimum number of infills (timber and plywood)
- Less crane time for repositioning big gang-forms on the jobsite



All information on the special website!

[www.frameco.ru](http://www.frameco.ru)